

# A REPLAT OF CRANE CREEK COUNTRY CLUB PHASE I BEING PORTIONS OF SECTIONS 10 AND 11, TWP. 38 S., RNG. 40 E., MARTIN COUNTY, FLORIDA

I, Louise V. Isaacs,  
Clerk of the Circuit  
Court of Martin County,  
Florida, hereby certify  
that this plat was filed  
for record in Plat Book  
9, Page 36, Martin  
County, Florida, Public  
Records, this \_\_\_ day  
of \_\_\_, 1983.

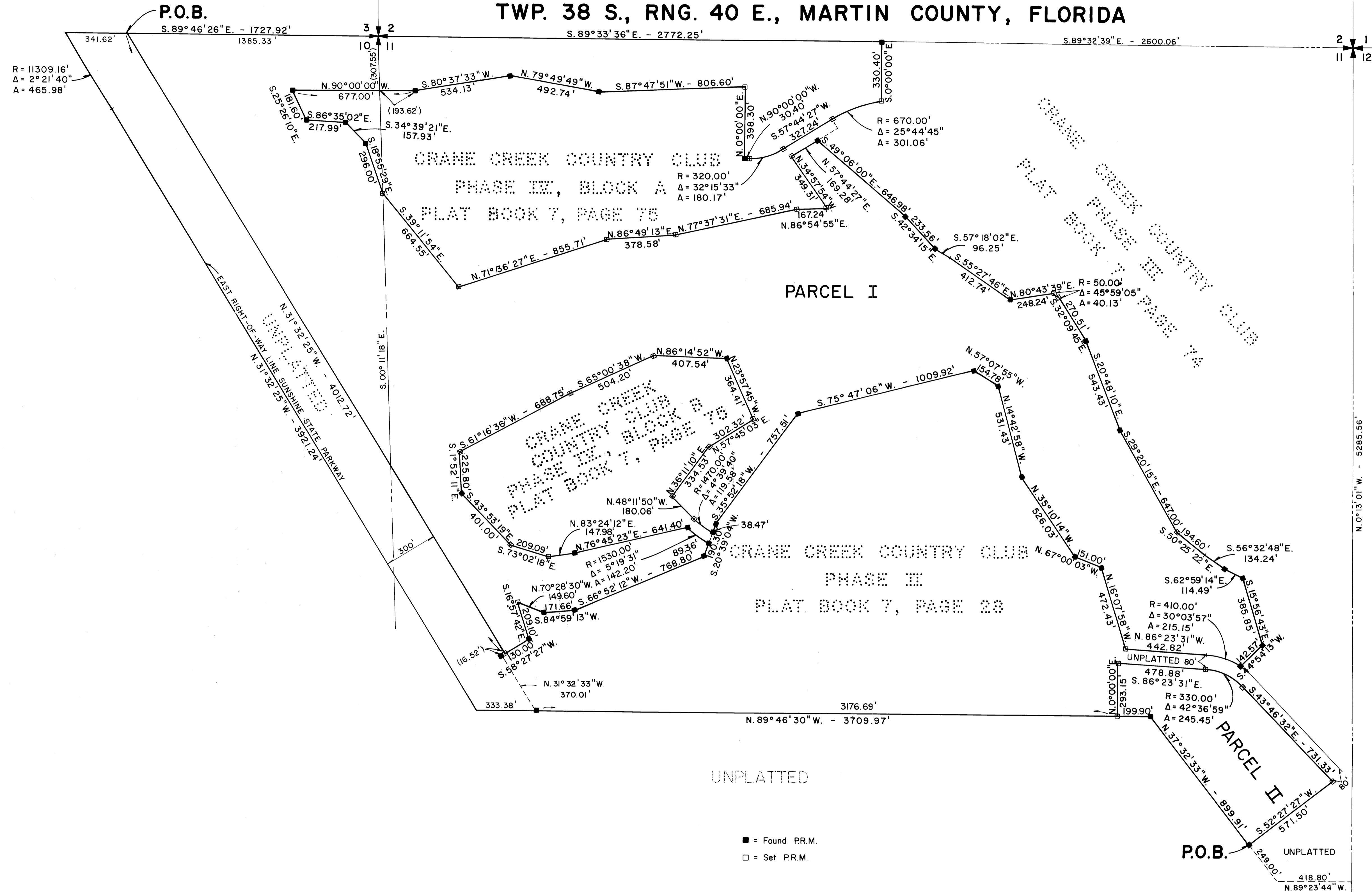
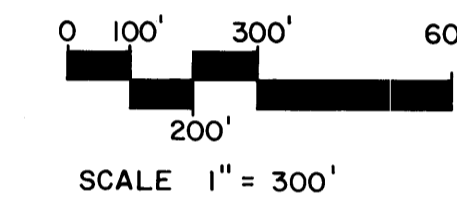
Louise V. Isaacs, Clerk  
Circuit Court  
Martin County, Florida

By: \_\_\_\_\_  
Deputy Clerk

File No. \_\_\_\_\_

(Circuit Court Seal)

SHEET 2 OF 2  
APRIL 1983



UNPLATTED

- = Found P.R.M.
- = Set P.R.M.

BEARING BASE:  
THE EAST LINE OF SECTION 11, TOWNSHIP 38 SOUTH, RANGE 40 EAST,  
IS TAKEN AS BEING N 0°13'01" W, AND ALL OTHER BEARINGS ARE  
RELATIVE THERETO.

P.O.B. UNPLATTED

J & J BLUEPRINTERS, WEST PALM BEACH

|   |   |   |
|---|---|---|
| LINDA M. BROOKING, FERRARI & HELLSTROM, P.C.<br>Surveyors, Engineers & Architects<br>25 INDIAN TRAIL, SUITE 200, GORRARD AVENUE<br>JUPITER, FLORIDA 33458 STUART, FLORIDA 33454<br>111 S.W. 111 SECOND STREET<br>FORT PIERCE, FLORIDA 33902 | 2 | 2 |
|---|---|---|